

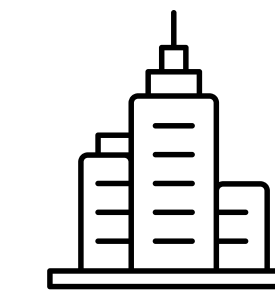
OPIOID CRISIS

VS

WAR ON DRUGS

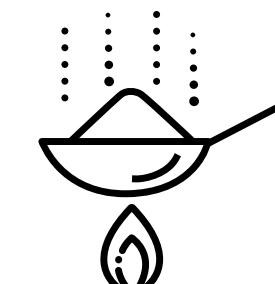
FRAMING

White/Rural/Suburban



Black/Brown/Inner-City/Rural

Opioids/Prescription Pills



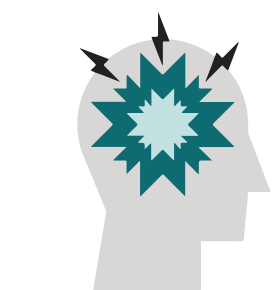
Heroin/Crack/Dope

Doctor Prescribed/"Pharma" Distributed



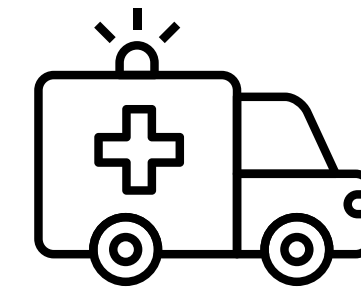
Drug Dealer/Drug Cartel

Substance Use Disorder (Disease)



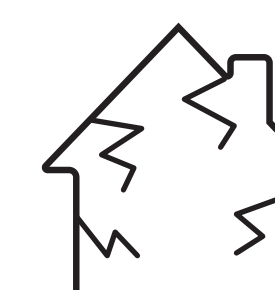
Addict/Crackhead/Junkie

Medical Issue/Public Health Emergency



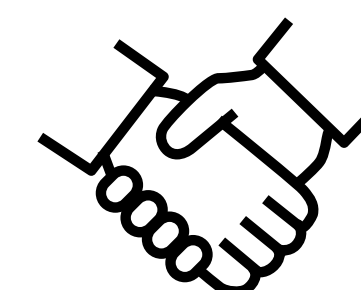
Crime/Criminal Justice Issue

Safe Injection Sites



Crack Houses/Drug Dens

Harm Reduction/Help/Save



Demonize/Lock Up/Incarcerate

Framing of Issues Turns into Perceptions/Stereotypes/Beliefs.
Those Perceptions/Stereotypes/Beliefs Feed into Practices/Policies/Laws.